

# APPLICATION CHECKLIST COMPETITIVE ENTRY



## APPLY

- ONLINE = \$75     PAPER = \$100

Competitive Entry programs are open for application on **October 1, and close February 15**. All supporting documentation is required by **4:30 p.m. (Saskatchewan time) on March 1**.

Please refer to [saskpolytech.ca](http://saskpolytech.ca) for a current listing of Competitive Entry programs.

## SUBMIT QUALIFYING DOCUMENTS

### HIGH SCHOOL TRANSCRIPTS

#### A. I am a current high school student.

Request an official electronic transcript from the Saskatchewan Ministry of Education\* at the end of semester one and at the end of semester two of the grade 12 year.

#### B. I am a high school graduate.

Request an official electronic transcript from the Saskatchewan Ministry of Education\*.

\*NOTE: Saskatchewan Ministry of Education = <http://www.k12.gov.sk.ca/etranscript/>  
If you attended high school outside of Saskatchewan, contact the required provincial office to arrange for the official transcript to be sent to Saskatchewan Polytechnic Enrolment Services by mail.

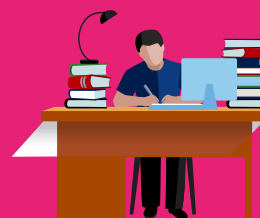
### POST SECONDARY TRANSCRIPTS

Transcripts must be sent **by mail** directly from the institution to Saskatchewan Polytechnic Enrolment Services.

### ADDITIONAL SELECTION CRITERION

There may be additional requirements for your program (i.e. First Aid, CPR etc.) Review the admissions tab on the program page for full details. Forward proof of enrolment and/or completion to Enrolment Services.

## STAY IN TOUCH



## KEEP IN MIND

- An application is complete when all qualifying documents are received by Enrolment Services.
- Proof of permanent residency and/or English language proficiency may be applicable.

To learn more, [saskpolytech.ca/howtoapply](http://saskpolytech.ca/howtoapply)

## ENROLMENT SERVICES

### MOOSE JAW CAMPUS

Saskatchewan St & 6th Ave NW  
PO Box 1420  
Moose Jaw, SK S6H 4R4  
[RegInbox.MooseJaw@saskpolytech.ca](mailto:RegInbox.MooseJaw@saskpolytech.ca)

### REGINA CAMPUS

4500 Wascana Parkway  
PO Box 556  
Regina, SK S4P 3A3  
[RegInbox.Regina@saskpolytech.ca](mailto:RegInbox.Regina@saskpolytech.ca)

### PRINCE ALBERT CAMPUS

Technical Building  
1100-15th Street E  
Prince Albert, SK S6V 7S4  
[RegInbox.PrinceAlbert@saskpolytech.ca](mailto:RegInbox.PrinceAlbert@saskpolytech.ca)

### SASKATOON CAMPUS

1130 Idylwyld Drive N  
PO Box 1520  
Saskatoon, SK S7K 3R5  
[RegInbox.Saskatoon@saskpolytech.ca](mailto:RegInbox.Saskatoon@saskpolytech.ca)

### Questions? Connect with us.

Visit [saskpolytech.ca](http://saskpolytech.ca).  
Email [askaquestion@saskpolytech.ca](mailto:askaquestion@saskpolytech.ca).  
Phone 1-866-467-4278 and ask for a Student Recruitment Advisor.



# YOUR TOMORROW STARTS HERE



Do you know which program you want to take?

No

## CAREER AND PROGRAM EXPLORATION TOOLKIT

- Attend an **Info Session**
- Browse through **150+ programs**
- Chat with a **Student Recruitment Advisor**
- Join a **Campus Tour**
- Take a **Career Planning Workshop**
- Try our **Program Explorer** tool
- Meet a **Career Counsellor**

For more information, visit  
[saskpolytech.ca/explore](http://saskpolytech.ca/explore)

To help confirm that you have made an appropriate program and career choice, consider checking out the following resources.

Yes

Great! Do you meet the admission requirements?

No

Academic upgrading is available.  
[saskpolytech.ca/upgrading](http://saskpolytech.ca/upgrading)

Yes



Great! It's time to apply.  
[saskpolytech.ca/applynow](http://saskpolytech.ca/applynow)  
(Application checklist on reverse side)



**saskpolytech.ca**  
1-866-467-4278