

# APPLICATION CHECKLIST APPLICANTS WITH FOREIGN CREDENTIALS



(for applicants with education outside of Canada)

## APPLY

- ONLINE = \$80     PAPER = \$100

## SUBMIT QUALIFYING DOCUMENTS

- Submit **Proof of Residency** and **English Language Proficiency (ELP)** to Enrolment Services to the campus which you applied. ELP is required of all applicants whose first language is not English. For more information visit [saskpolytech.ca/englishlanguagerequirements](http://saskpolytech.ca/englishlanguagerequirements).

- TRANSCRIPTS**

Transcripts include all secondary and any additional education.

If your transcripts are in a language other than English, you must submit translated versions. Translation available by Association of Translators and Interpreters of Saskatchewan ([atis-sk.ca](http://atis-sk.ca))

**Step 1)** Email transcripts (PDF) to [internationaldocuments@saskpolytech.ca](mailto:internationaldocuments@saskpolytech.ca).

**Step 2)** If selected for an audit, you may be requested to submit your official documents. Please ensure that any documents requested by our assessors are submitted as soon as possible. Please refer to our [website](#) for more information.

**Note:** Saskatchewan Collaborative Bachelor of Science in Nursing applicants will require official documents sent direct from the issuing institution.

- ADDITIONAL QUALIFYING DOCUMENTS**

There may be additional requirements for your program (i.e. First Aid, CPR etc.) Review the admissions tab on the program page for full details. Forward proof of enrolment and/or completion to Enrolment Services.



## KEEP IN MIND

- Review admission process for program of interest (FQFA or Competitive Entry)
  - An application is complete when all qualifying documents are received by Enrolment Services.
- To learn more, [saskpolytech.ca/howtoapply](http://saskpolytech.ca/howtoapply)

## ENROLMENT SERVICES

### MOOSE JAW CAMPUS

Saskatchewan St & 6th Ave NW  
PO Box 1420  
Moose Jaw, SK S6H 4R4  
[RegInbox.MooseJaw@saskpolytech.ca](mailto:RegInbox.MooseJaw@saskpolytech.ca)

### PRINCE ALBERT CAMPUS

Technical Building  
1100- 15th Street E  
PO Box 850  
Prince Albert SK S6V 5S4  
[RegInbox.PrinceAlbert@saskpolytech.ca](mailto:RegInbox.PrinceAlbert@saskpolytech.ca)

### REGINA CAMPUS

4500 Wascana Parkway  
PO Box 556  
Regina, SK S4P 3A3  
[RegInbox.Regina@saskpolytech.ca](mailto:RegInbox.Regina@saskpolytech.ca)

### SASKATOON CAMPUS

1130 Idylwyld Drive N  
PO Box 1520  
Saskatoon, SK S7K 3R5  
[RegInbox.Saskatoon@saskpolytech.ca](mailto:RegInbox.Saskatoon@saskpolytech.ca)



Please refer to our website for helpful resources on [Admission Requirements](#), our [Application Guide](#) and [English Language Proficiency](#).

## STAY IN TOUCH

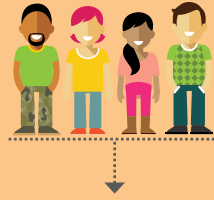


## Questions? Connect with us.

Visit [saskpolytech.ca](http://saskpolytech.ca).  
Email [askaquestion@saskpolytech.ca](mailto:askaquestion@saskpolytech.ca).  
Phone 1-866-467-4278 and ask for a Student Recruitment Advisor.



# YOUR PATHWAY TO BECOMING A STUDENT



Do you know which program you want to take?

No

Yes

**CAREER AND PROGRAM EXPLORATION TOOLKIT**

- Attend an **Info Session**
- Browse through **150+ programs**
- Chat with a **Student Recruitment Advisor**
- Join a **Campus Tour**
- Take a **Career Planning Workshop**
- Try our **Program Explorer** tool
- Meet a **Career Counsellor**

For more information, visit [saskpolytech.ca/explore](http://saskpolytech.ca/explore)

I do not meet ELP requirements


Review ELP options and write preferred ELP exam

I was unsuccessful

I was successful!

Review options and try again  
[saskpolytech.ca/englishlanguage requirements](http://saskpolytech.ca/englishlanguage requirements)

I meet ELP requirements



**Great! It's time to apply.**  
[saskpolytech.ca/applynow](http://saskpolytech.ca/applynow)  
(review checklist on reverse side)

Not qualified?  
Let's review your options.

Qualified?  
Welcome to Sask Polytech!



**saskpolytech.ca**  
1-866-467-4278